

Simco's comprehensive GUI allows complete integration of the scorpion^{ION}3 ion bar into your systems. The scorpion^{ION}3 bar utilizes Simco's industry leading microcontroller intelligence digital ionization technology (US patent 6,252,756 and international patents). The software allows multiple ion bars to be connected and controlled from a single PC through dedicated hardware. Connecting the system provides Scorpion^{ION}3 performance and settings to be monitored, configured and diagnosed.

Connecting Scorpion^{ION}3 ion bars to the software requires the use of a dedicated communication/power distribution bus. The computer interface (CI) hardware continuously polls the condition, settings, and diagnostic information of connected bars. The CI hardware allows construction of a scorpion^{ION}3 network consisting of multiple CI units each with multiple scorpion^{ION}3 ion bars connected.

Scorpion^{ION}3 CI's come in both true RS-485 and Ethernet capable models. Multiple CI's can be networked via RS-485 bus to an Ethernet capable model to allow connection of multiple units through a single IP address. The computer interface also provides a user interface, which provides an auxiliary (24V) power input and a relay contact for system level fault detection.

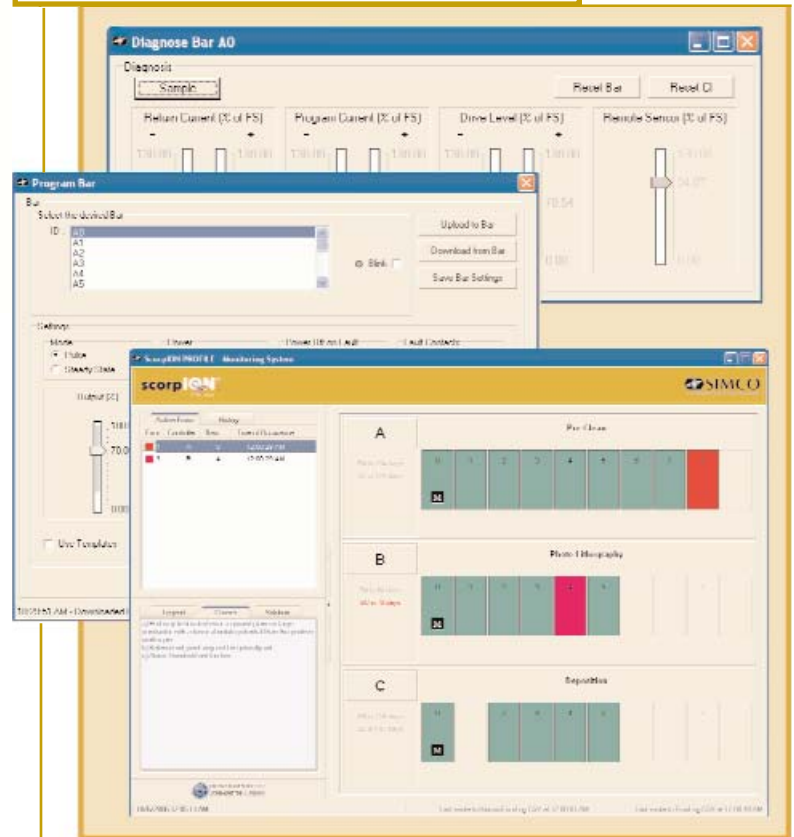
You may use the system software in two ways, as a **User** or a **Manager**. Login to the system as a Manager requires a password. A Manager may edit the location name of system components and modify parameters related to preventive maintenance and calibration of system components.

The software consists of three main views, the **Program Bar Panel**, **Monitoring Panel**, and **Diagnose Bar Panel**.

Total control of all operating parameters can be made directly from the **Program Panel** of the system GUI. Select one or multiple ion bars for programming. You can save complete setup parameters to recall and use at a later time for additional installations. And Simco's Peak Reduction technology (US patent #6,826,030) can be applied through the system GUI to deliver the lowest offset voltage/discharge time performance ratio available in the industry.

Setting capabilities include steady state or pulse mode with user selectable pulse times. Select output (power) level, adjust balance using Simco's simple ratio skew method, and dial in a percentage of pulse overlap time to optimize discharge times. Set and save optimum ionization settings, then retrieve them for uploading to additional ion bars.

scorpion^{ION}™³ Monitor & Control Software System



The **Monitoring Panel** is divided into two areas the Status Panel and the Graphic Panel. A status bar at the bottom of the screen displays the current date and time on the left. Two additional status areas display the time the Historic Error Log was written to and the last time the Active Error Log was written to on the far right side of the status bar.

The top of the Status Panel shows all active error conditions. The Causes Tab displays common causes of an error. The information displayed is updated based on the error selected (highlighted) in the Active Error list. The Solution Tab displays possible corrective measures that can be taken to eliminate an error condition. The History Tab displays a detailed history of corrected errors.

The system **Diagnose Panel** compares set levels to actual operating levels. Monitoring the ion bars power supplies gives insight into hardware conditions that may affect operational performance and predict maintenance interval requirements. Return current and drive level information is made available.

Specifications:

Power:	24 VDC, 100 mA
Scorpion2 Bus:	RJ-11 modular connector x 2
User Interface:	Terminal socket block
RS-485 Bus	RJ-11 modular connector x 2
Ethernet: (optional)	RJ-45 modular connector x 1
Indicators:	Power - green LED Fault - red LED
Enclosure:	Stainless Steel
Weight:	0.64 kg (1.4 lbs)

SIMCO scorpion3 Monitor and Control Software System requirements

Personal Computer

- AMD / Intel Pentium processor
- Microsoft Windows: 98 Second Edition; Millenium Edition; NT 4.0 with Service Pack 6; 2000 with Service Pack 2; XP Professional or Home Edition.
- 32MB of RAM (64MB recommended)

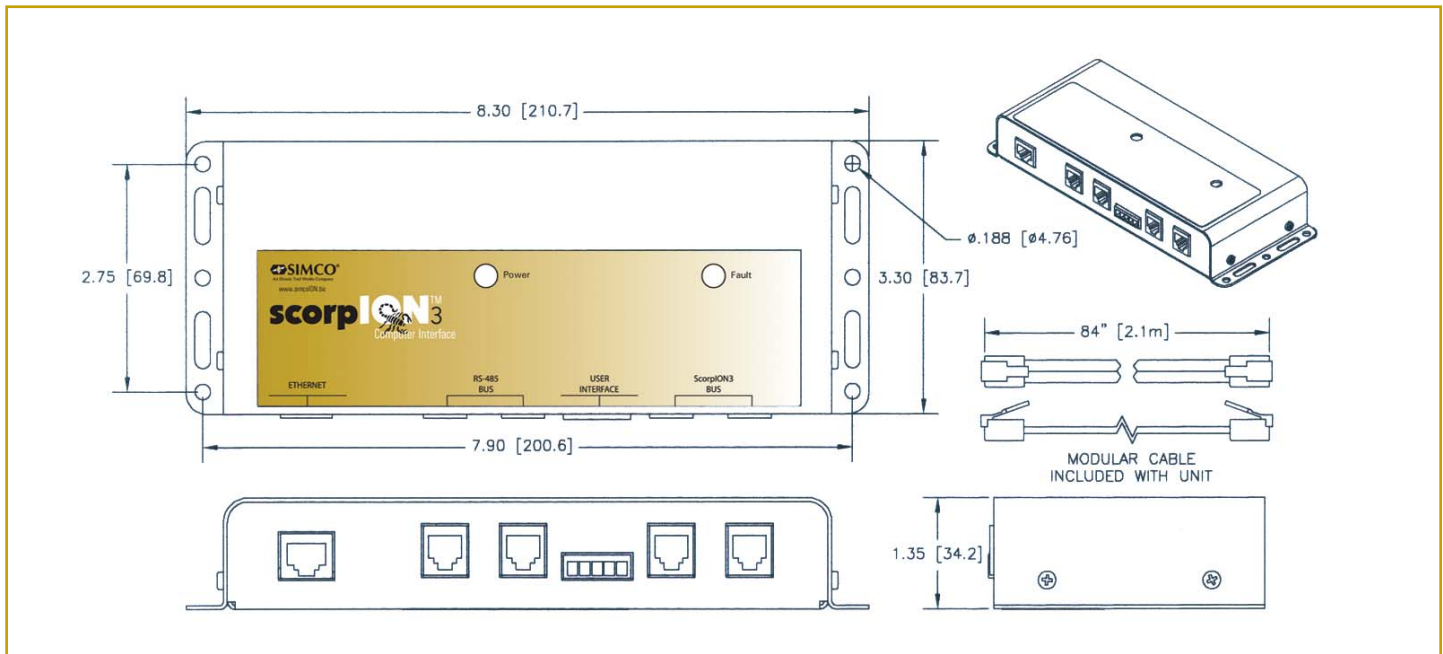
Documented Application Programming Interface (API) is available for those interested in developing your own system integration.



Computer Interface (CI) Hardware

Computer Interface (CI) and Software

Description	Part Number
CI RS-485, No software	5051373
CI Ethernet, No software	5051374
CI RS-485, with Software	5051375
CI Ethernet, with Software	5051376



Scorpion3 Computer Interface

In Ionization technology, SIMCO® clearly has the leadership role. Our research and manufacturing facilities are worldwide... our technical expertise is second to none...and our products simply inspire the competition. For a no-hassle assessment and quote call 800-538-0750 (in USA) or log on to www.simcoION.biz.



Ionization for Electronics Manufacture