



D12R/D6R/D3R Digital Winding Tester

"The "D" Series Testers simplifies the on-going need for motor insulation testing."



The D12R/D6R/D3R is the newest digital tester offered by Baker Instrument Company, an SKF Group Company. This instrument is designed to maximize testing capabilities in a lightweight, sturdy format. Additional testing capabilities have been added to the tester, to make it a more comprehensive tool for predictive maintenance. As with the other Digital testers, the new D12R/D6R/D3R's high precision testing capabilities allows data collection in the shop or the field. The results can then be printed immediately or stored for later use. This tester demonstrates our continual commitment to motor integrity and Insulation testing.

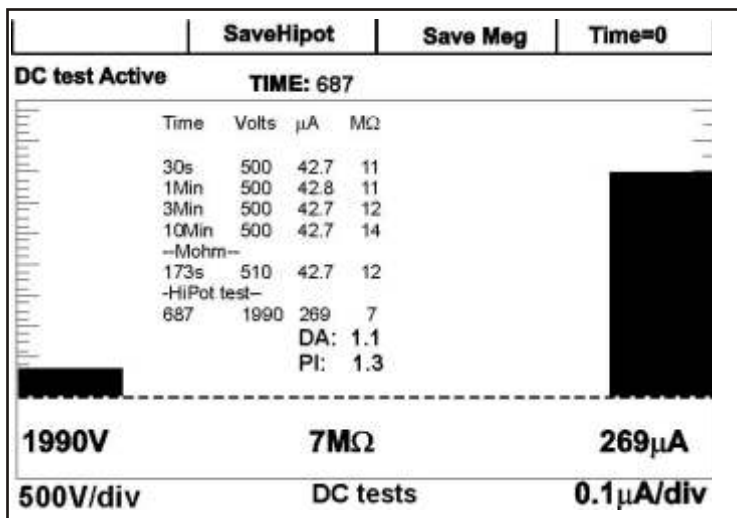


Baker[®]
an SKF Group Company

Resistance, HiPot and Surge in one Tester

With the D12R/D6R/D3R Digital Winding Tester from Baker Instrument Company, an SKF Group Company, you can perform Resistance, HiPot and Surge tests, as well as digitize and store data for future use.

The Resistance Test verifies the existence of dead shorts within the turn-to-turn coils, shows any imbalances between phases due to turn count differences, along with locating poor wire connections or contacts.

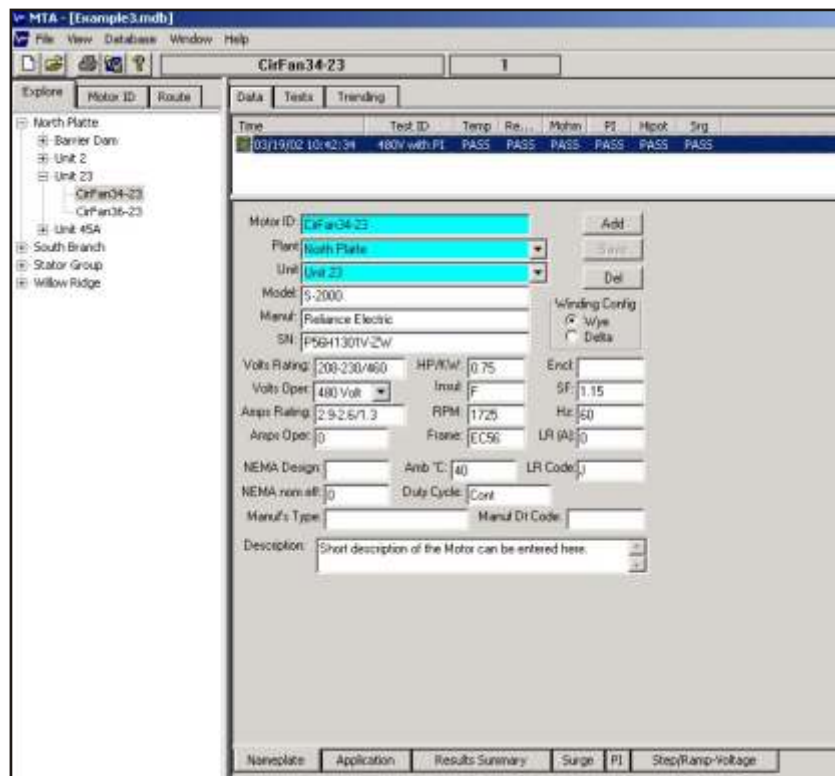


DC HiPot testing detects faults in groundwall/earth insulation, and also provides a complete Polarization Index test. The groundwall/earth insulation system consists of the wires insulation, slot liner insulation, wedges, varnish, and sometimes phase paper.

Surge testing detects faults in both inter-turn winding and phase-to-phase insulation systems. Using advanced analog-to-digital conversion hardware, the "D" series captures the surge test waveform, remembers it, displays it indefinitely, and prints it to the included ink jet printer. This surge waveform storage capability can be

applied to other motors besides simple induction motors. The D Series can be used to test all the rotating fields of a synchronous motor by storing the waveform from a surge test on one coil, and comparing that waveform to a waveform from every other coil. The Digital Winding Tester can also be used on DC armatures and fields. The resulting waveform can then be compared to all other bar-to-bar or span tests to detect a winding fault.

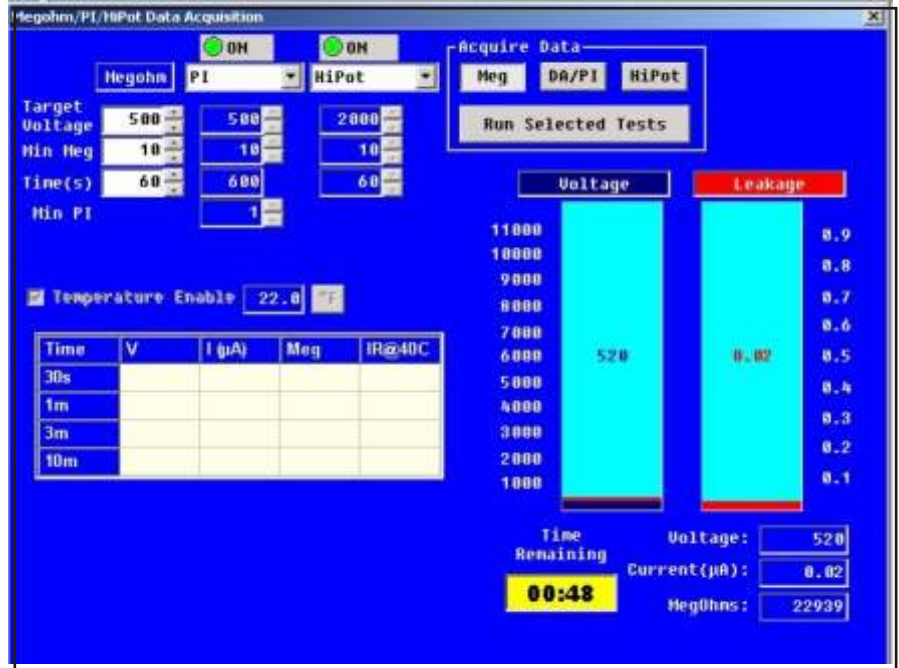
Test results from up to 10 motors in the field can be stored, retrieved, printed, and uploaded to a desktop program for file management and analysis. Each of these 10 motor records has its own memory location. Each location can store up to three surge wave patterns plus DC HiPot test voltage and current.



The Digital Winding Tester can operate on its own in the field, and then transfer the test data to a computer running Baker Instrument Company, an SKF Group Company's Motor Test Acquisition (MTA for Windows) software for further analysis. MTA for Windows provides database capabilities, waveform comparison, report generation, printouts, and other functions that turns test data into usable information. All options are easily accessed with on-screen prompts.

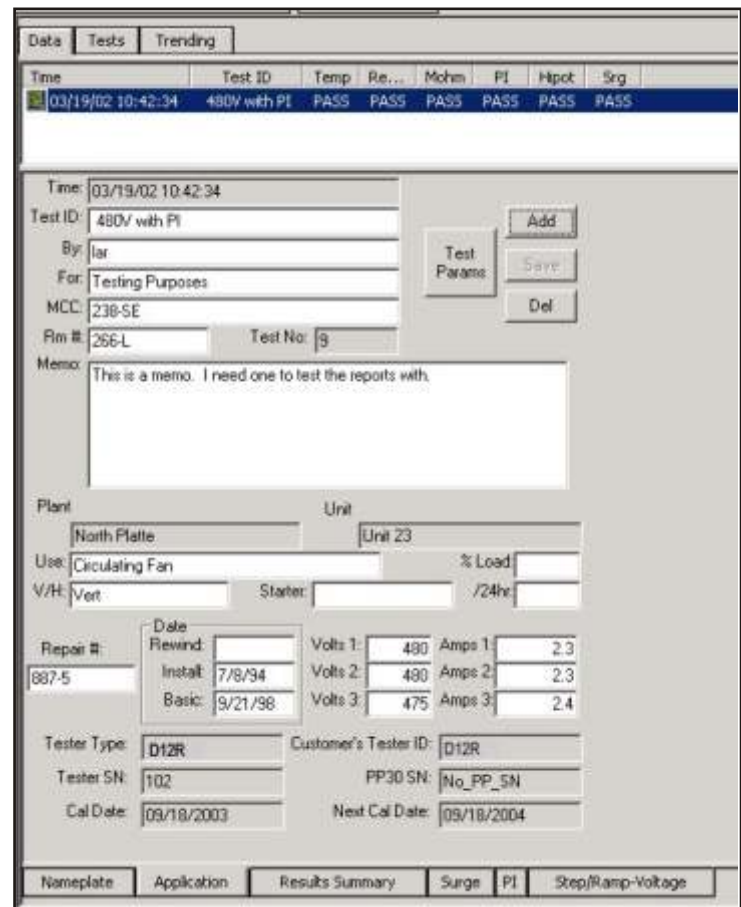
Call us today. We never stop looking for ways to improve your competitive edge with testing solutions.

- FS-12 Footswitch for Push to Test hands free operation
- PP-30D 30kV Surge/DC HiPot Power Pack
- Motor Test Management Analysis Software (MTA for Windows) supports Windows 98 Second addition, NT-SP6, 2000, & XP
- Compatible Ink Jet printer



Features

- Storage of test data for up to 10 motors
 - 3 Surge Wave Pattern with Amplitude and Time base
 - Surge Test Peak Voltage Amplitude
 - DC HiPot Voltage, Leakage Current
 - Insulation Resistance
- Baker's QRR reliability High Voltage Design
- Zero Start Interlock for Tester High Voltage Output
- Bright, Sharp 5-inch digital display
- Leads Energized safety warning indicator
- HiPot Over-Current safety warning indicator
- Input Source Open Ground operator safety disable and warning indicator.
- Test Lead insulated to 45 kV rating
- Dedicated Test Leads for Resistance Testing
- Test Lead Select Switch with All Leads Grounded operator safety position
- Parallel Printer and PC interface



| | | | |
|---------------------------|-------------------------------------|--------------|--------------|
| Surge Test | 12kV | 6 kV | 3kV |
| Max Output Voltage | 12000V | 6000V | 3000V |
| Max Output Current | 400A | 350A | 190A |
| Max Pulse Energy (joules) | 2.88 | 0.72 | 0.18 |
| Discharge Capacitance | .04 μ f (all) | | |
| DC HiPot Potential Test | | | |
| Max Output Voltage | 12000V | 6000V | 3000V |
| Maximum Output Current | 1000 μ A | 1000 μ A | 1000 μ A |
| Maximum Overcurrent Trip | 1/10/100/1000 μ A (all) | | |
| Typical Overcurrent Trip | .85/8.5/85/850 μ A (all) | | |
| Current Resolution | 0.1/1/10/100 μ A per div. (all) | | |
| Resistance Test | .0008 ohms - 216 ohms | | |
| Physical Characteristics | | | |
| Weight (pounds) | 40 lbs | | |
| Dimensions | 19 x 8 x 23 in (WxHxD) | | |
| Power Input | 85-264 VAC 50/60 Hz | | |

*Data Subject to change without notice. Printed in USA 06/07



Whether you're troubleshooting, manufacturing, or rebuilding, Baker Instrument Company, an SKF Group Company's Digital Tester consistently detects faulty windings that other testers miss.



Baker Instrument Company, an SKF Group Company
 4812 McMurry Avenue
 Fort Collins, CO 80525
 970/282-1200 - 800/752-8272 - Fax 970/282-1010
www.bakerinst.com